

KL-15 | KL-07

Rugged & Portable Digital Level



Simple, Fast and Accurate

- 1.5mm precision for DL-15/ 0.7mm precision for DL-07
- 110m distance measurement
- Magnetic damping Compensator
- Onboard measurement and recording programs
- 20,000-point memory & SD card slot
- Ideal for construction and general applications

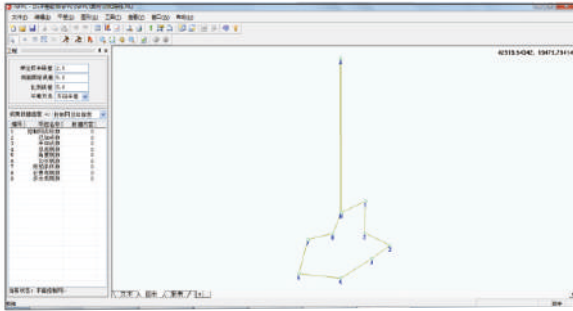
User friendly & Practical

Automatic reading: Minimize human errors, no more misreading

Higher Accuracy: Averaging mode for more accurate results

Rapidity: Shorten the measuring time by a half

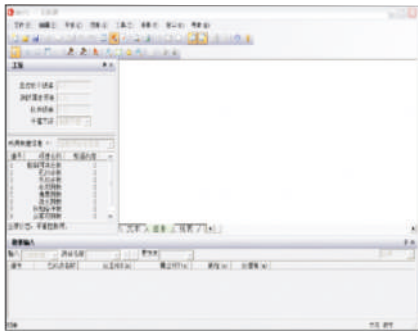
Auto Save: Internal memory storage or SD card memory optional, paperless working.



Powerful Post-processing Software

It contains adjustment routines for dynamic adjustment of horizontal & vertical control network and angle & direction adjustment.

Easily zoom in or out to see the overall data in graphic.



Seamless Transfer with Various Data Formats

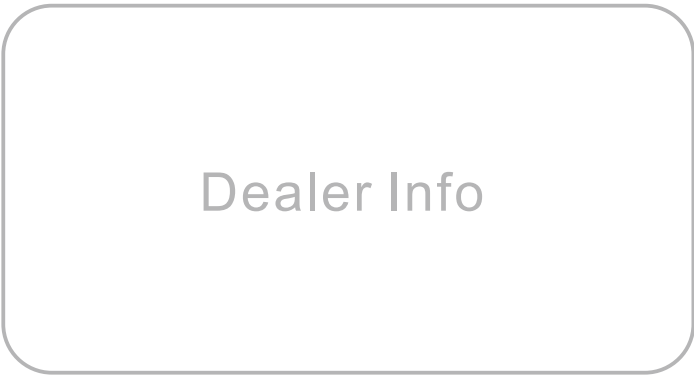
| StationName | SD_Length | AccHeightDiff.length | SD_Diff | d | HeightDiff |
|-------------|-----------|----------------------|---------|---------|------------|
| 1 | 35.2335 | 35.2335 | 0.1125 | 0.1125 | |
| 2 | 54.682 | 89.9155 | -0.292 | -0.1465 | |
| 3 | 48.915 | 138.8295 | -0.937 | -1.0855 | |
| 4 | 35.088 | 173.9185 | -0.458 | -1.5435 | |
| 5 | 37.1895 | 211.1080 | -0.6915 | -2.2350 | |
| 6 | 55.139 | 266.2470 | 0.731 | -1.5040 | |
| 1 | 55.1430 | 55.1430 | -0.7300 | -0.7300 | |
| 2 | 37.1975 | 92.3405 | 0.6835 | -0.1465 | |
| 3 | 35.1025 | 127.4430 | 0.4855 | 0.3390 | |
| 4 | 48.9055 | 176.3485 | 1.0975 | 1.4365 | |
| 5 | 54.6470 | 230.9955 | 0.2240 | 1.6605 | |
| 6 | 35.2170 | 266.2125 | -0.2050 | 1.3345 | |

Precision Analysis & Report

The KL Data Download & Processor Software, makes the field work easier to display the complex leveling tasks.

Specifications

| Item | | KL-07 | KL-15 |
|--|-------------------|----------------------------------|---------------------------------|
| Height Accuracy (standard deviation for 1km double run leveling) | Digital Reading | 0.7mm | 1.5mm |
| | Optical Reading | 2.0mm | |
| Distance Accuracy | Digital Reading | D≤10m:10mm;D>10m:D*0.001 | |
| Distance Range | Digital Reading | 2m~110m | |
| Minimum Display | HD | 0.1mm/1mm | |
| | Distance | 0.1/1cm | |
| Measuring Time | | within 3s in normal condition | |
| Telescope | Magnification | 32X | |
| | Resolving Power | 3" | |
| | Field of View | 1°30' | |
| | Multiple Constant | 100 | |
| Compensator | Additive Constant | 0 | |
| | Type | magnetic-damping | |
| | Range | >±12' | |
| Data Storage | Accuracy | 0.30"/1' | 0.50"/1' |
| | Storage | 16MB, 20,000 points | |
| Data Storage | Point Name | increasing/decreasing/customized | |
| | Connection | USB | |
| | External Storage | SD Card | |
| Circular vial Accuracy | | 8'/2mm | |
| Display | | 160*64dpi LCD with illumination | 128*32dpi LCD with illumination |
| Working Temperature | | -20°C~50°C | |
| Dimension | | 230mmX150mmX210mm | |
| Weight | | 2.5kg | |
| IP Standard | | IP55 | |



Professional's Choice

GUANGDONG KOLIDA INSTRUMENT CO., LTD.

Add: 7/F, South Geo-information Industrial Park, No.39 Si Cheng Road, Tian He IBD, Guangzhou 510663, China

Tel: +86-20-22139033 Fax: +86-20-22139032

Email: export@kolidainstrument.com <http://www.kolidainstrument.com>